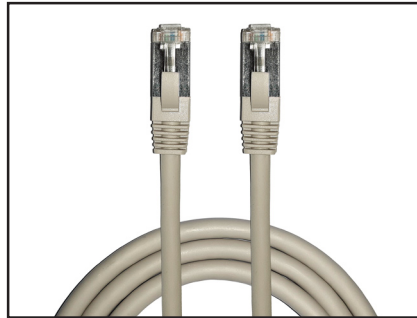


## CATEGORY 6 SHIELDED PATCHCORD



### FEATURES

- CE, Lead-free & RoHS2 compliant.
- ISO/IEC 11801, CENELEC EN 50173-1 and IEC 60603-7
- IEC 60603-7-2 and IEC 60603-7-4
- Compatible for T568A and T568B wiring schemes

### SPECIFICATIONS

Material	Cable	26 AWG *4 PAIR + Filler + Mylar + Drain Wire + AL-Foil + PVC/LSZH Jacket
	Connector	RJ45 (8P8C) Male type with shield
	Insulation	Clear polyester, UL94V-2
	Contacts	Brass, Gold plated G/F
	Shield	Copper, Nickel plated
	PVC molding	PVC
Electrical	Current Rating	1.5 Amp
	Insulation Resistance	500 Megohm min.
	Contact Resistance	20 Milli-ohm max
	Dielectric Strength	1000 VAC (RMS)
	Voltage	30 VAC max.
Mechanical	Insertion life	750 mating cycles
	Pull Force	20 lbs (89N)
Environmental	Temperature	-10°C ~ 60°C
	Humidity	10% ~ 90%RH

### PART NUMBER GENERATOR

INTEL6FUPPC	Category 6 Shielded PVC Patchcord
INTEL6FULPC	Category 6 Shielded LSOH Patchcord